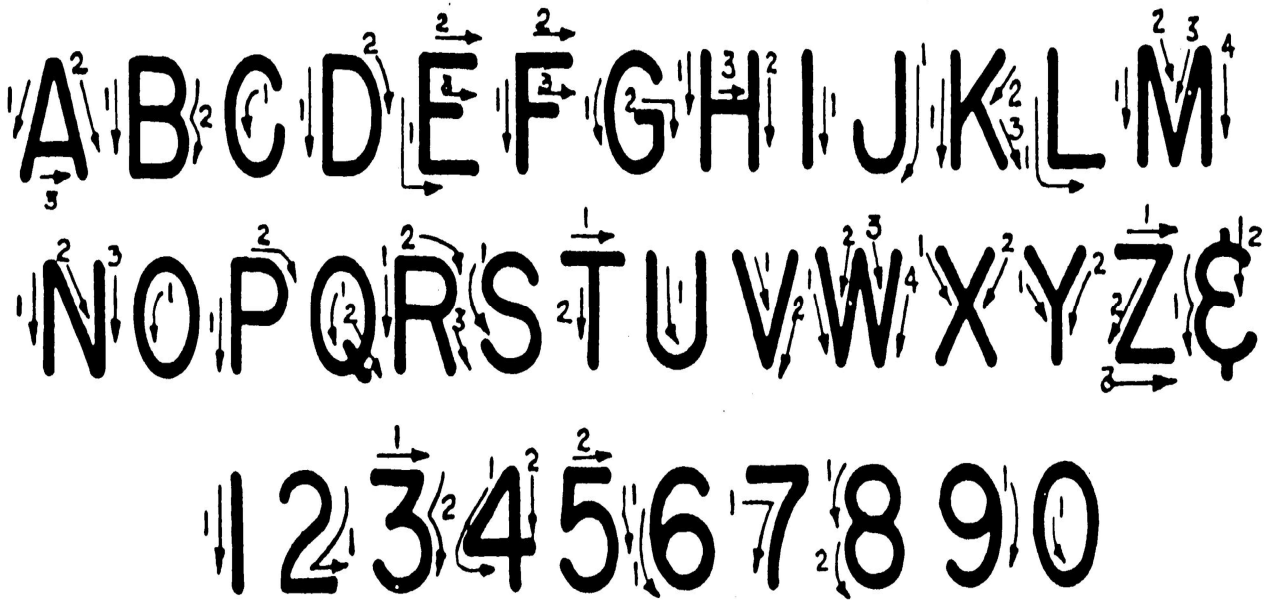


FREEHAND LETTERING PRACTICAL EXERCISES

UPPER CASE GOTHIC LETTERING GUIDE

Single Strokes and Uniform



FREEHAND LETTERING

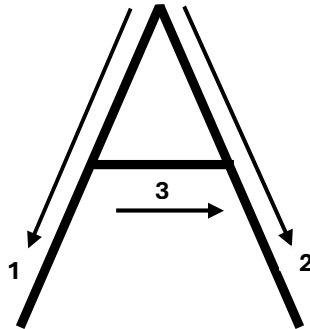


Figure 2.3

1. All lettering must be UPPER CASE GOTHIC STYLE LETTERING
2. LETTERING SHOULD BE PERFORMED USING SINGLE STROKES AND BE UNIFORM.
3. HOW TO PROPERLY HOLD THE DRAFTING DEVICE:
 - a. Hold the pencil back from the point (comfortable and natural distance)
 - b. Hand and arm free and easy movement
 - c. Sharpen the designer's pencil to a conical point
 - d. Grip the pencil firmly enough to control the strokes but not so rigidly as to stiffen the designer's movements. The designer's arm and hand should move freely and easily, and the point of the pencil should extend approximately 1.5" beyond the designer's fingertips.
 - e. Ensure to rotate the pencil slightly between strokes to maintain the point. Initial lines should be firm and light, but not fuzzy.
 - f. Avoid making grooves in the designer's paper by using too much pressure.
4. SIZES OF TEXT HEIGHT (TH):
 - a. Text height is based on the scale of a drawing.
 - i. #4 is the Text Height (TH).
 - ii. #8 is double the size of Text Height.

For this exercise the drafter will need to properly demonstrate their ability to place all the desired text on the space available. When using the entire set of the lines the bottom of the letter will start at the bottom line and the top of the letter will be touching the top line.

For example, the letter "A" if utilizing the single stroke method: The start of the "A" will be placed on the bottom line and the top of the A touching the top line and finishing the A at the bottom line. With the middle of the A crossing the middle line.

1) Using the 1st and 2nd set of three lines, write out the alphabet and numbers.

2) Afterwards write out the following on the 4th set of three lines;

- a. Last Name, First Name
- b. Troop
- c. Rank
- d. BSA ID #

Example:

→ #8 LAST NAME, FIRST NAME, TROOP, RANK, BSA ID

→ #4 ABCDEFGE 12345678

Freehand Lettering Practical Exercise

(1)

A

(2)

(3)

(4)

(5)

(6)

(7)

(8)